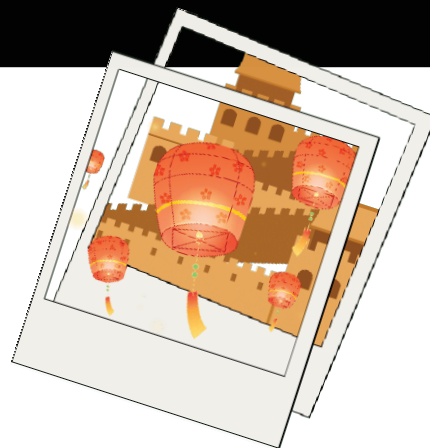


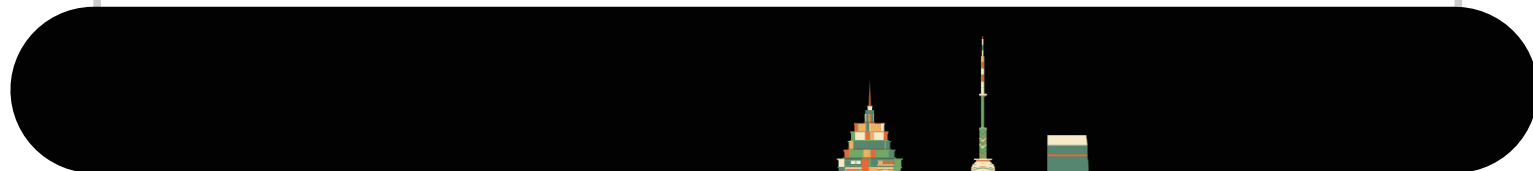
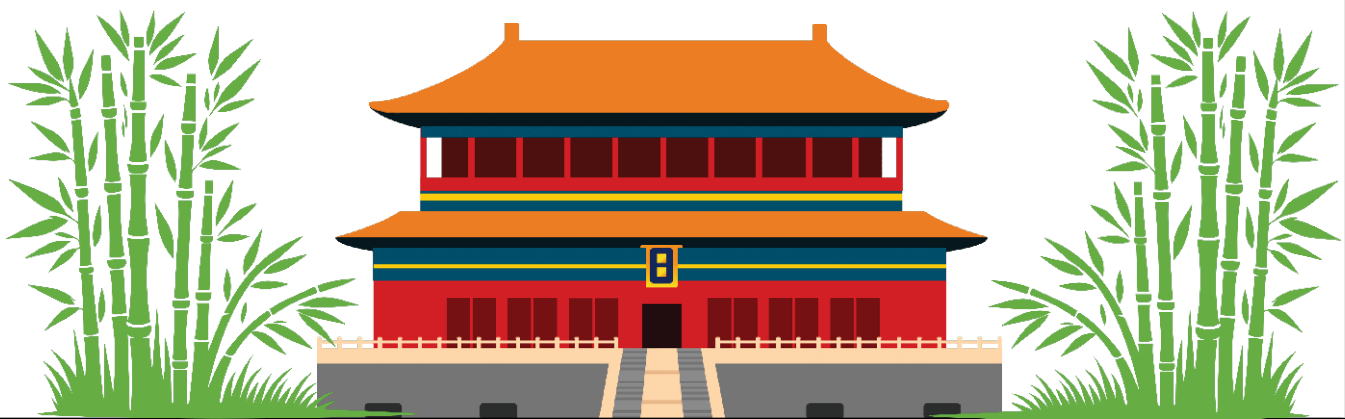
START 1

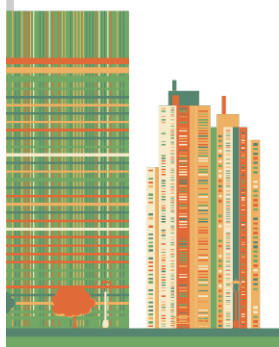
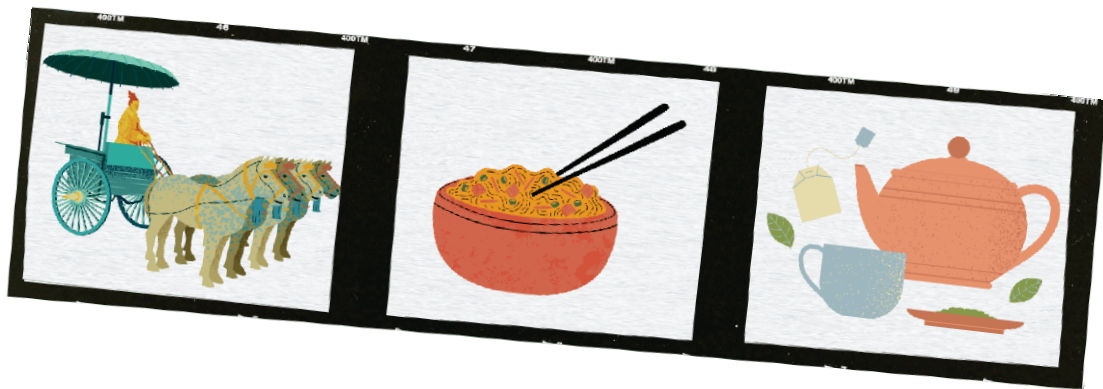




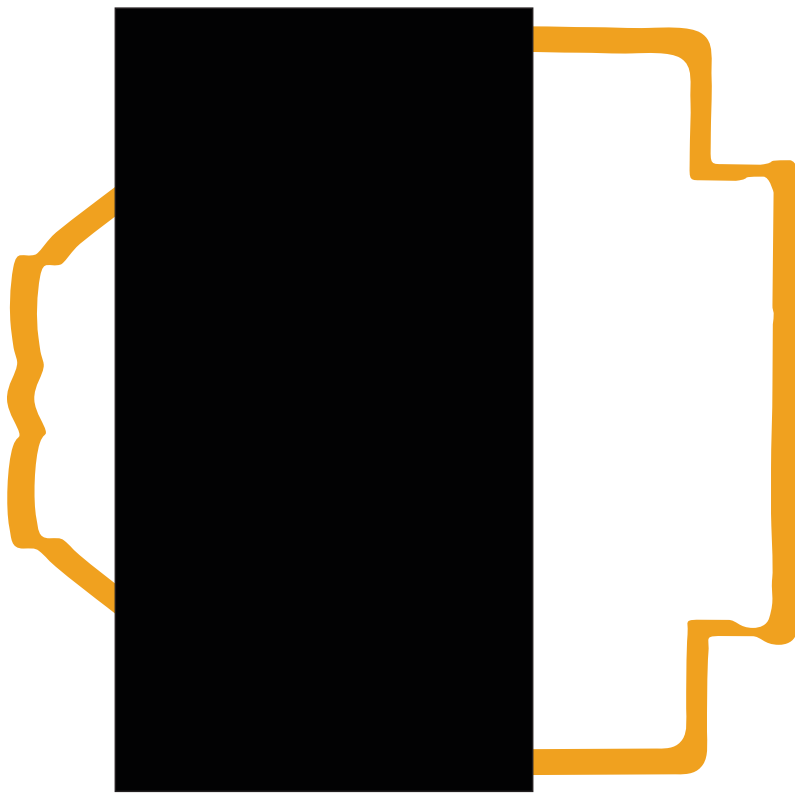








Zona za kalibraciju

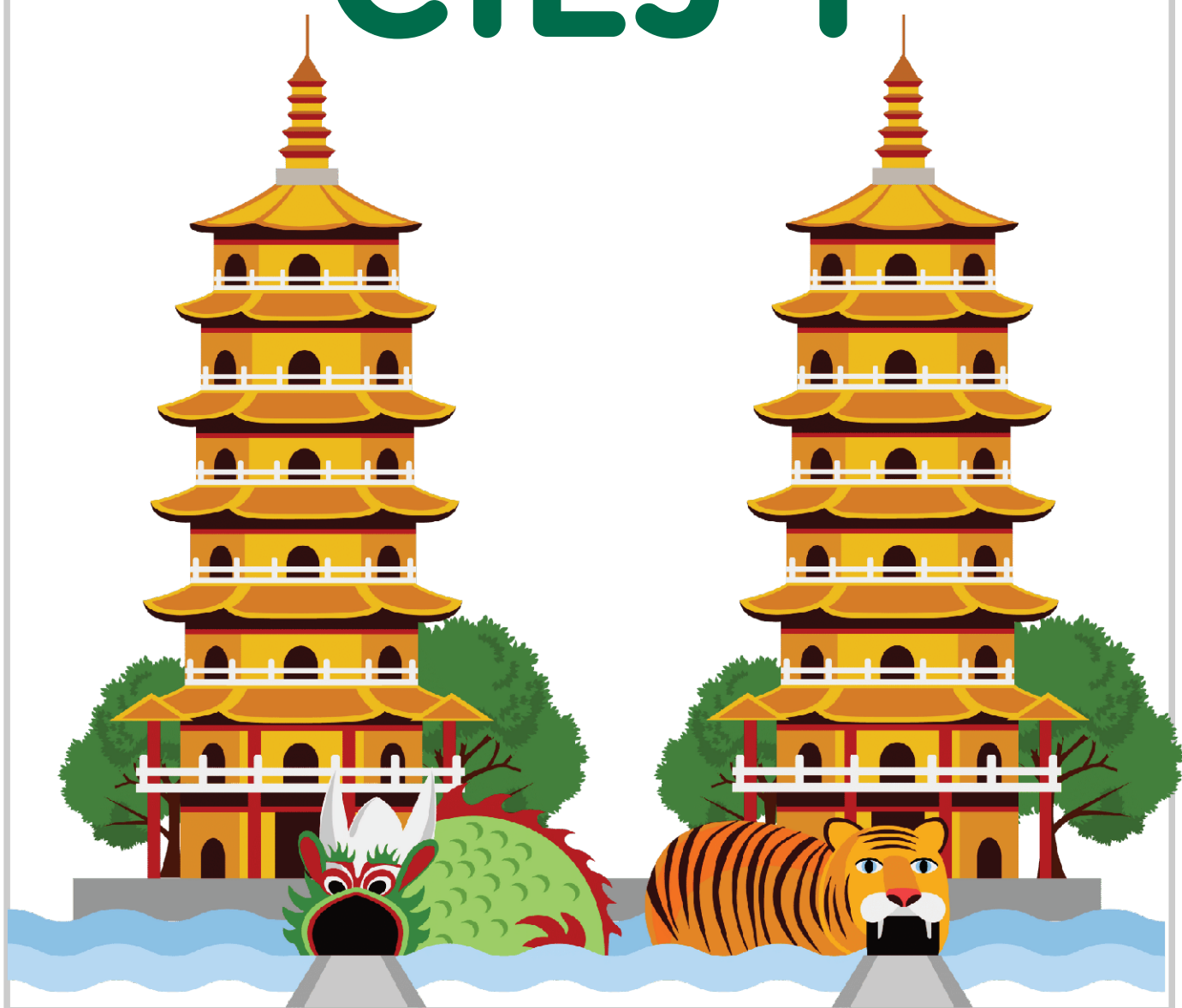


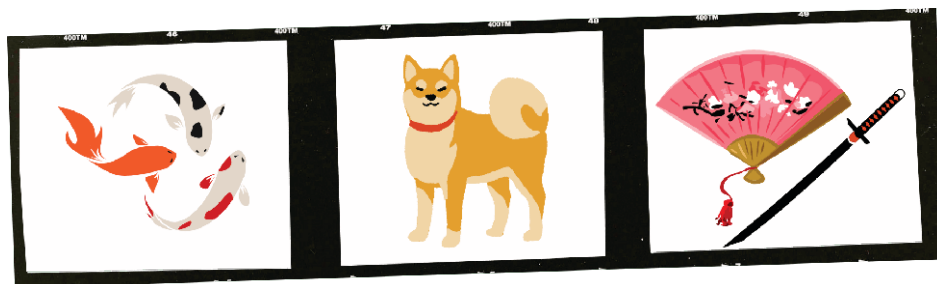
1. Postavite robot tako da je sa svih 5 senzora na crnoj površini.
2. Držite pritisnutu tipku za kalibraciju koja se nalazi s prednje lijeve strane robota oko 1 sekunde.
3. Kada dvije gornje svjetleće diode zatrepere nekoliko puta, kalibracija je gotova.

START 2

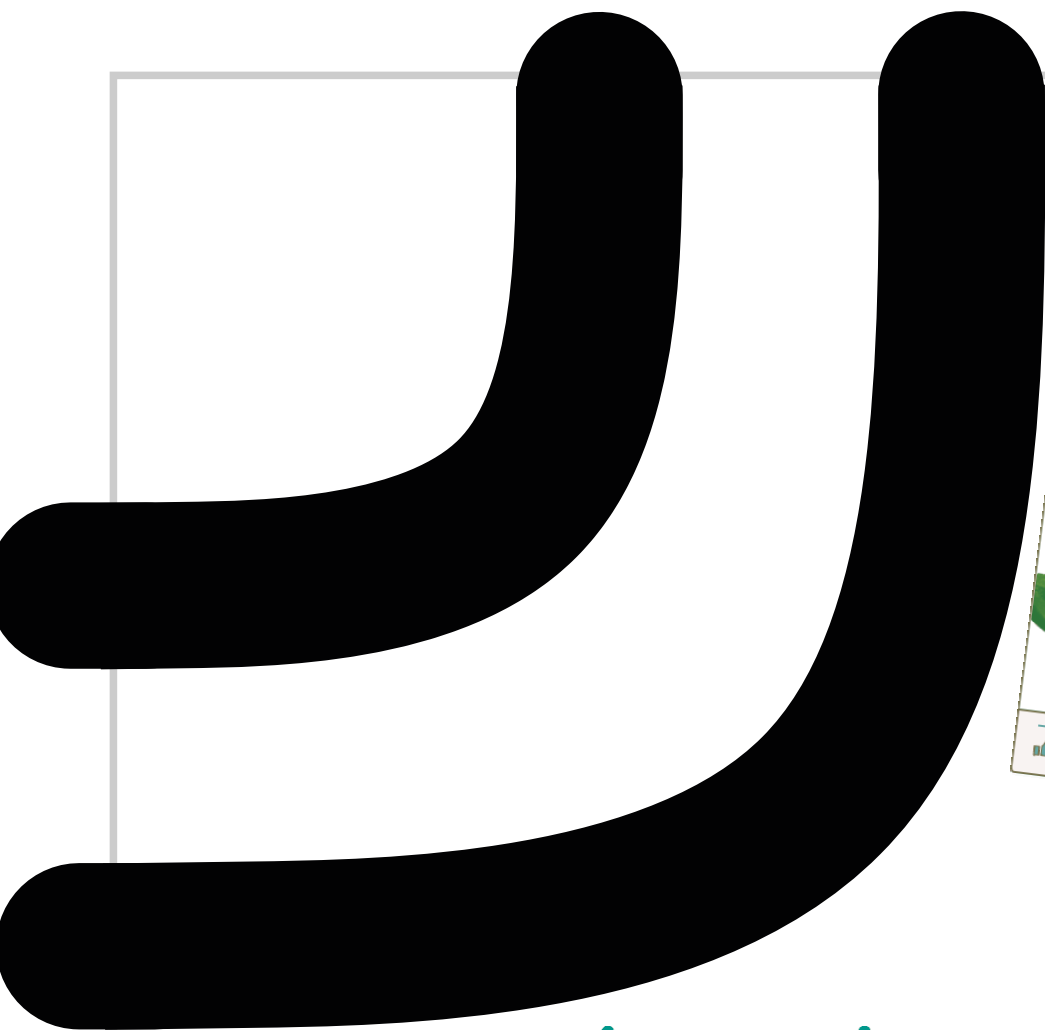


CILJ 1

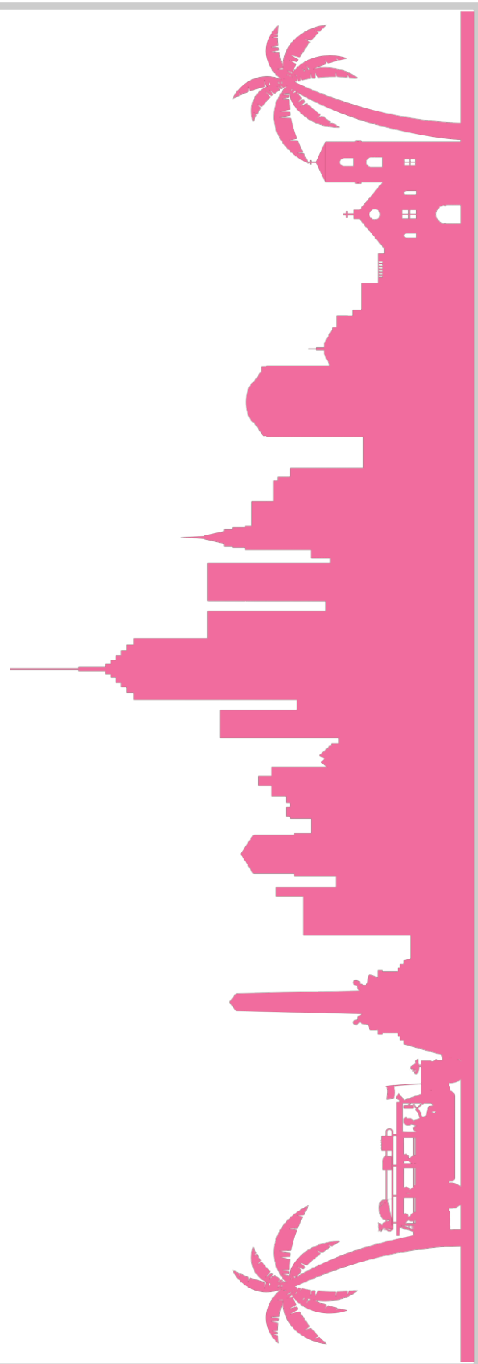
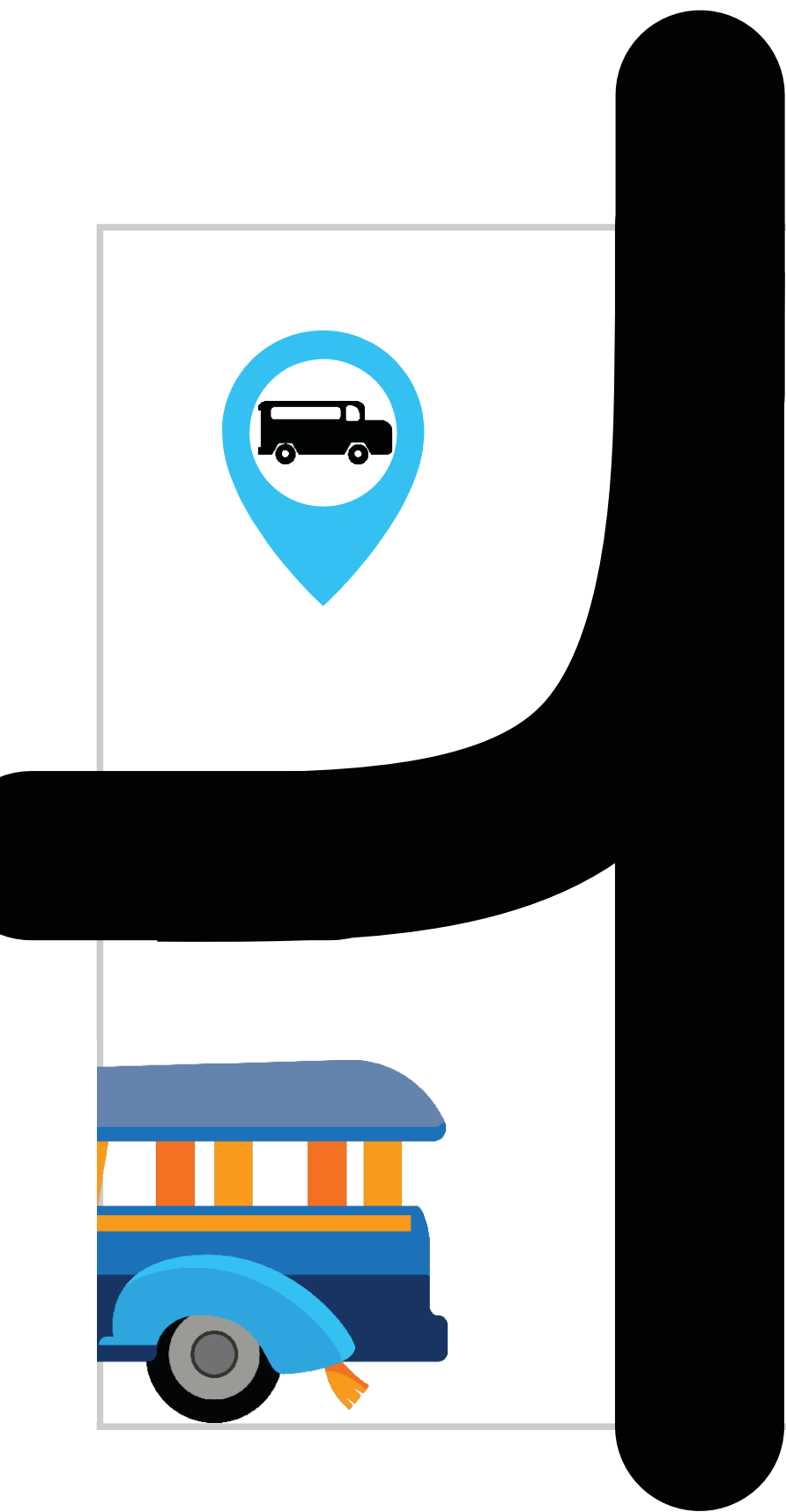


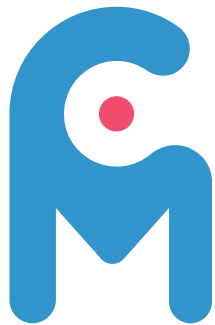






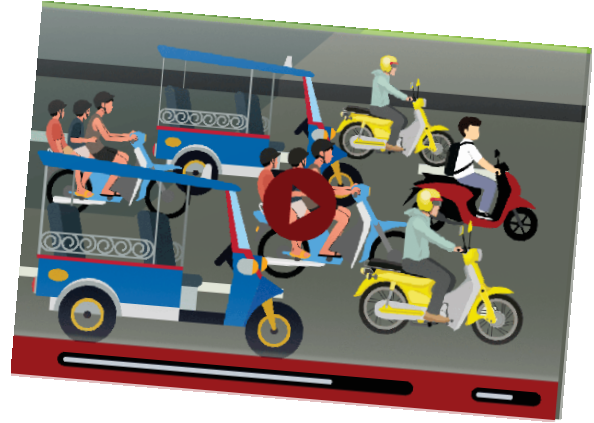


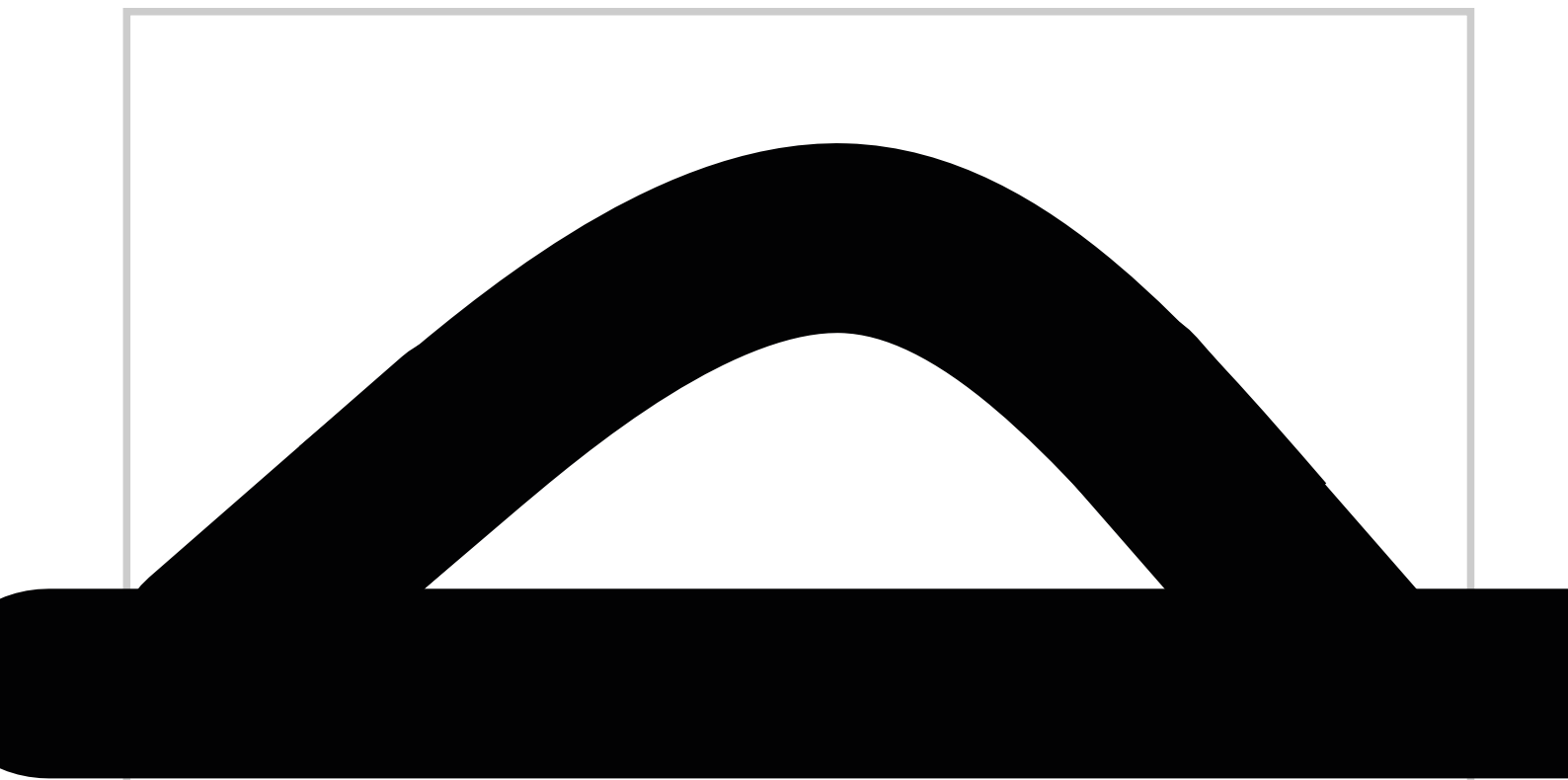


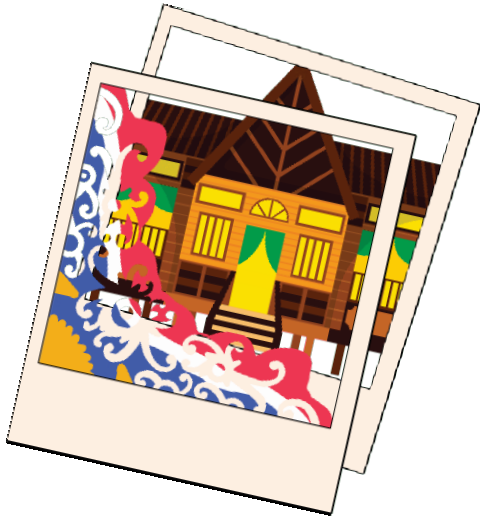


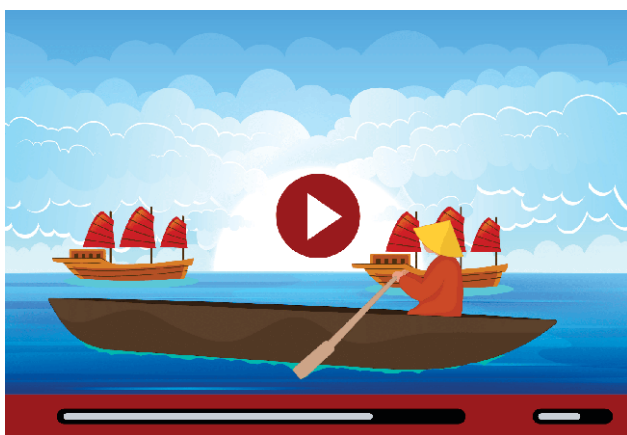
**CROATIAN
MAKERS**

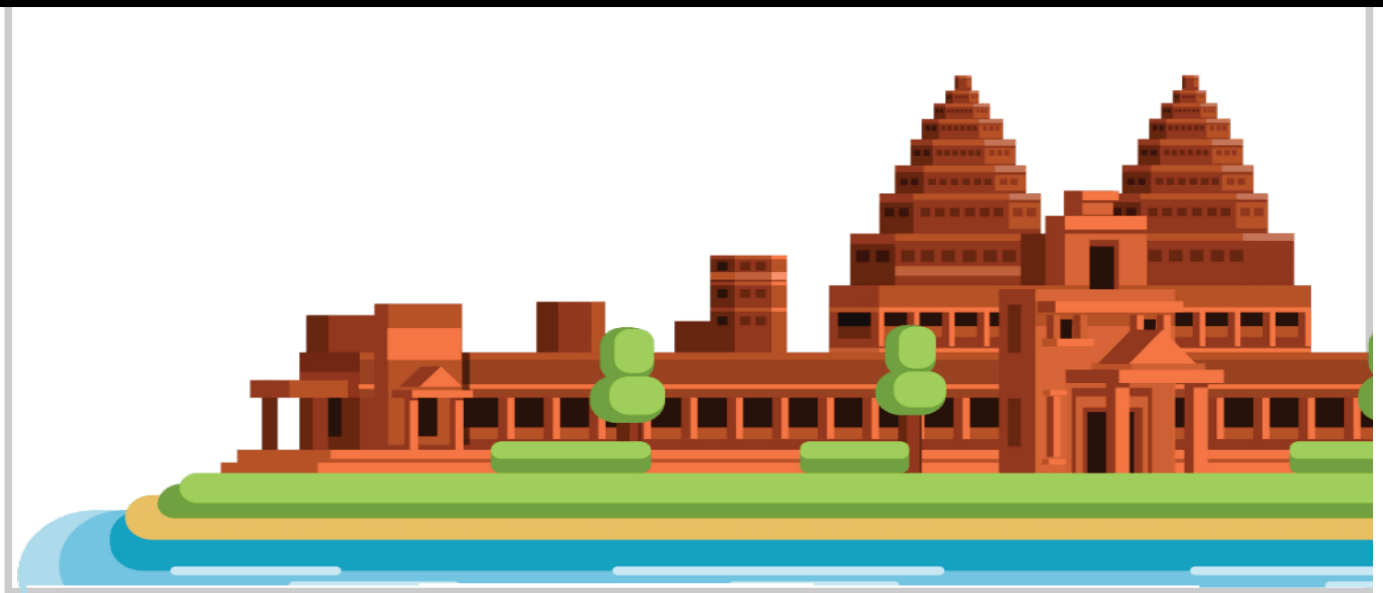
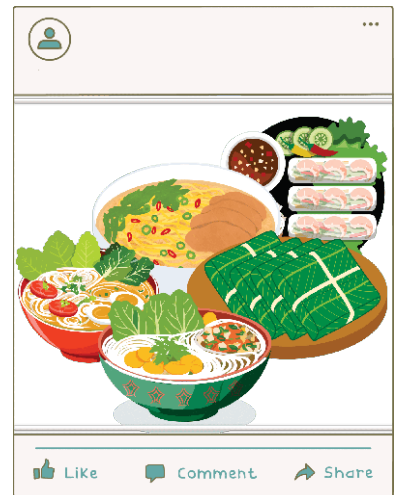


















CILJ 2

